

## Glue Lock Installation | 10 steps to install & setup

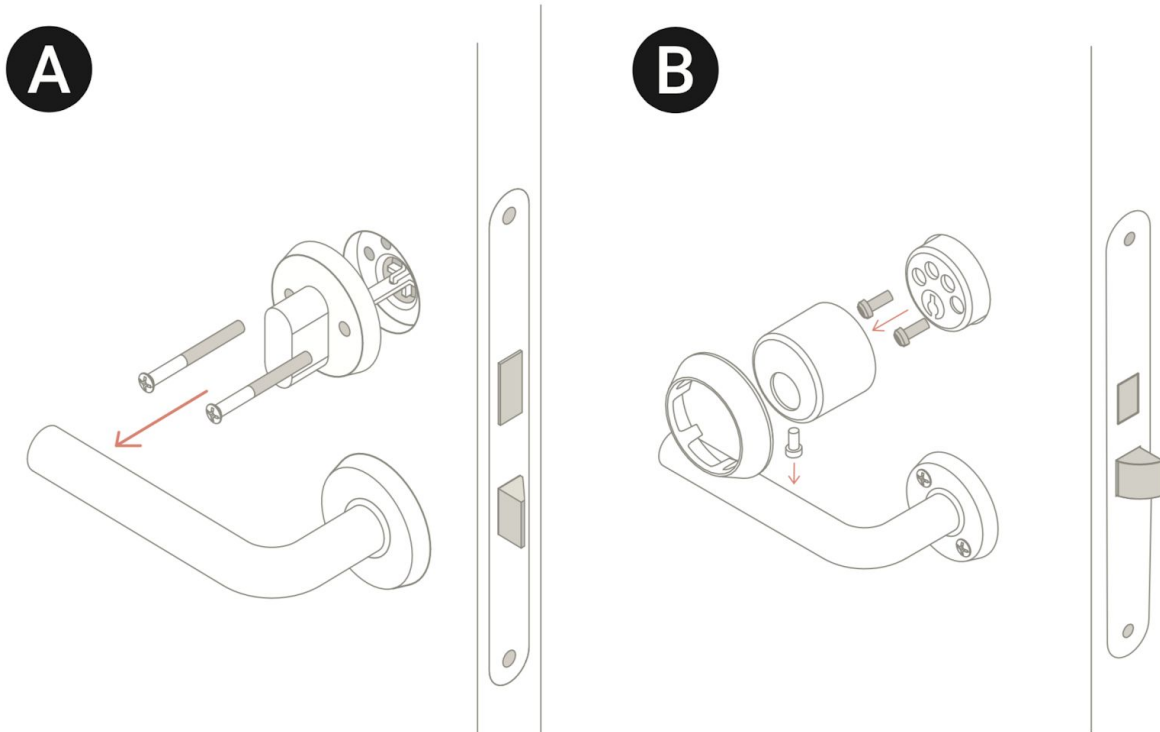
1. Using the separate compatibility guide, inspect the customer's current door lock to make sure it is compatible with the Glue Lock, ask them to download the Glue app and make an account while you are installing.



2. Open the Glue Lock retail box to reveal the lock and components

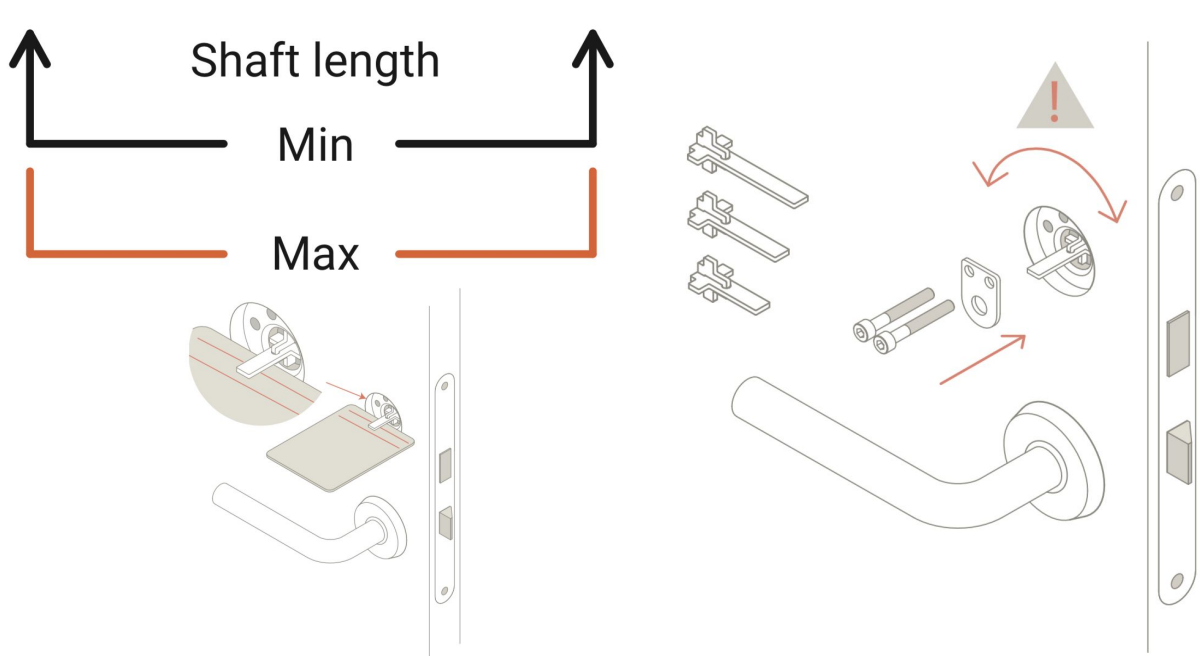


3. Prop the door open so it cannot close, then unscrew and remove the thumb turn on the inside of the door

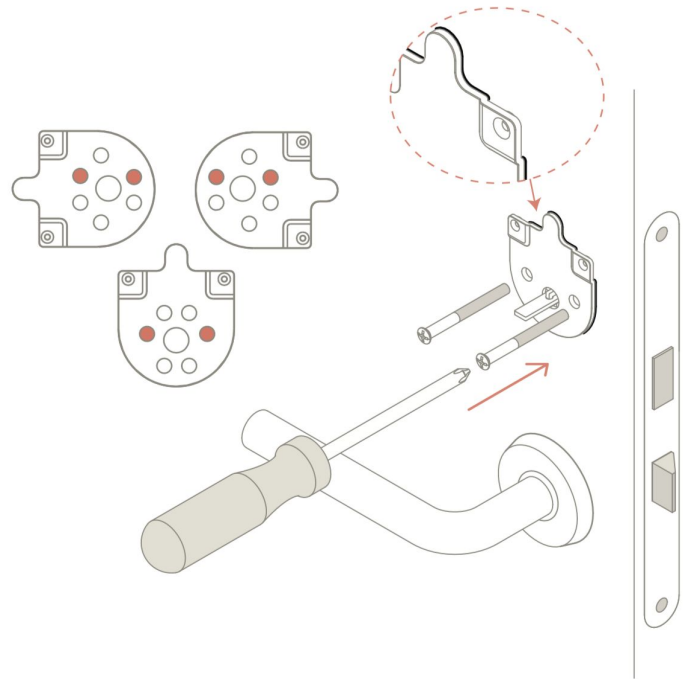


4. Measure the existing tail piece using the card in the retail box, it should be between the MAX and MIN lines. If it is within range, proceed with step 5

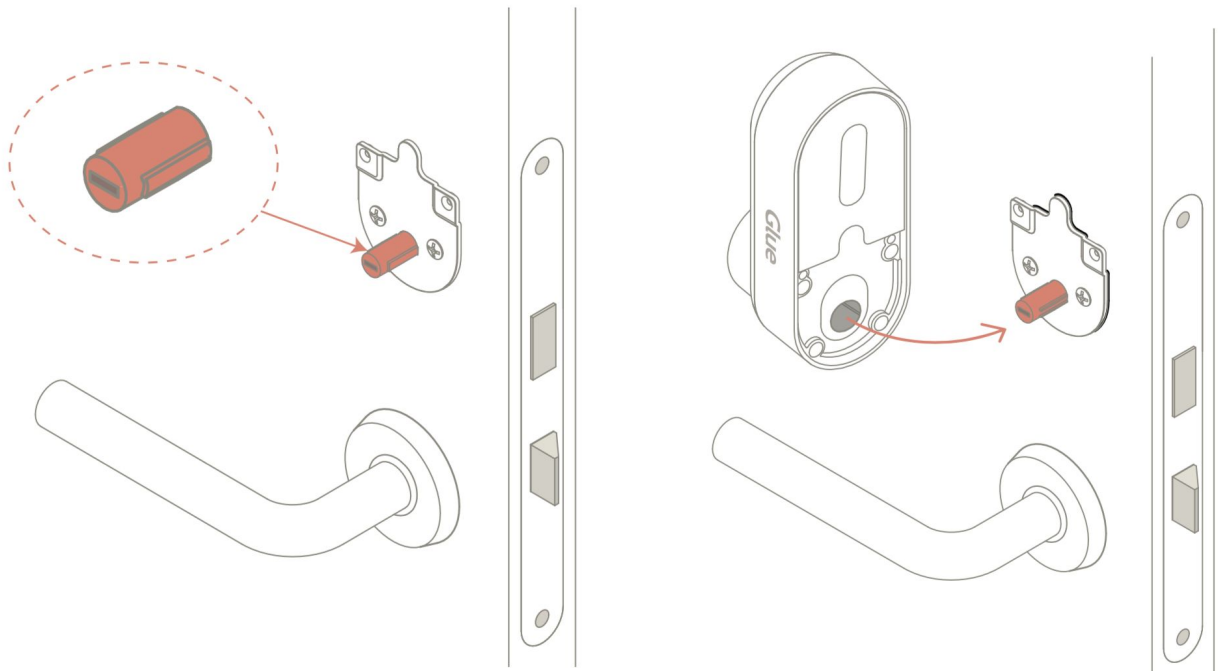
If the tail piece is too long or too short, unscrew the D-Plate as shown below and replace it with one of the longer/shorter tail pieces from the retail box, using the card again to ensure it is the correct length. Screw the D-Plate back on once completed.



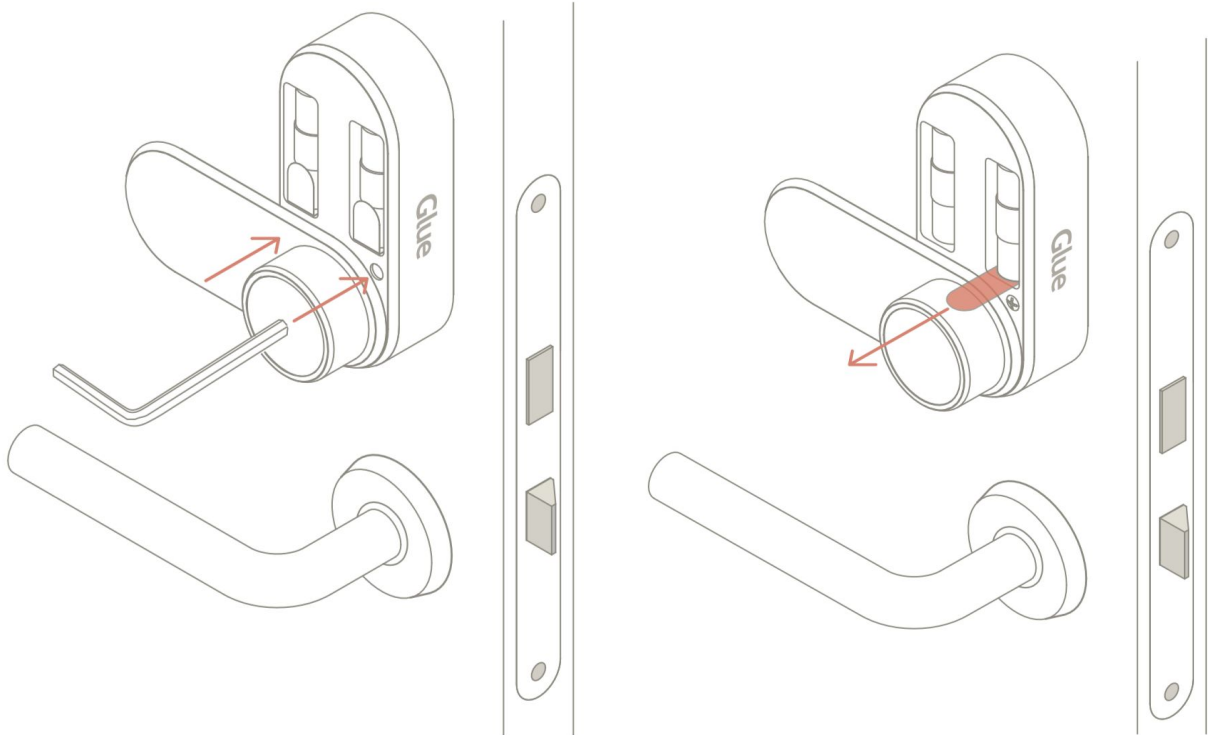
5. Use the screws from the customer's original thumb turn to loosely attach the mounting plate to the door in whichever orientation the customer prefers. If the screws from the thumb turn are not the right length, cut the screws provided to the correct length.



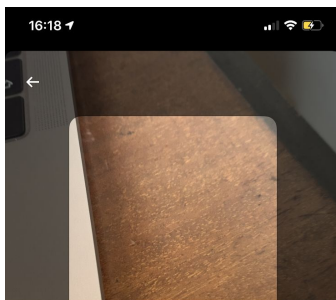
6. Slide the small cylinder provided over the tailpiece, then slot the Glue Lock onto the cylinder. **Do not rotate the tailpiece when fitting.**



7. Hold the Glue Lock against the door firmly, rotate the battery cover and use the allen key provided to screw the Glue Lock onto the mounting plate. Gently pull the Glue Lock from side to side on the door to check it is securely fitted, then remove the battery tabs and slide the battery cover shut



8. The Glue Lock will flash indicating it is ready to calibrate. Use the Glue app on the customer's phone to setup and calibrate the lock, following the instructions onscreen. You will need the retail box, scanning the QR codes on the base of the box to pair the Glue Lock, hub and phone together.



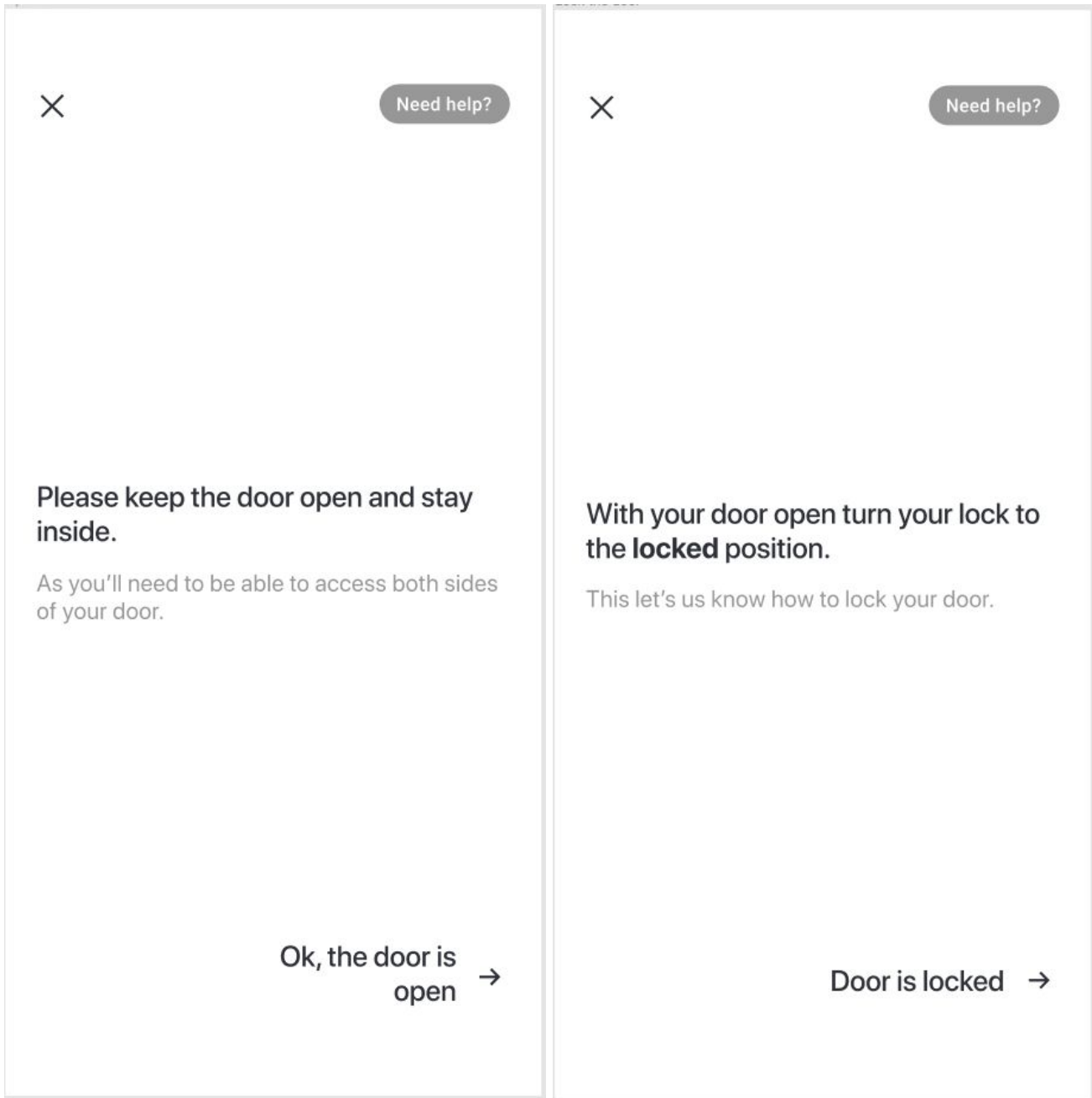
Please start by scanning the QR code found in the package or on the back of the lock.

Or enter Serial Number

Continue →



9. Ensure the door is propped open. Using the customer's phone, calibrate the lock following the onscreen instructions.



10. Give the phone back to the customer, then plug in the hub at the nearest wall socket and ask the customer to complete the hub pairing. Once paired, ask the customer to test the lock using their phone by swiping the app to lock and unlock the door.

The installation is now complete. Frequently asked questions can be answered at [GlueHome.com/support](https://www.gluehome.com/support)

